

Proteins and Genomic Alterations; IHC as a Molecular Method

Slide Seminar

Amir Vahedi, MD

MMR section

Golsa Shekarkhar, MD

PD-L1 section

Mehdi Montazer, MD

Coordinator

The 26th International Congress Of Pathology & Laboratory Medicine

Session for Molecular Pathology and Cytogenetics

Thursday (10/03/2024), 9:00-10:30 am

Mismatch Repair (MMR) Proteins

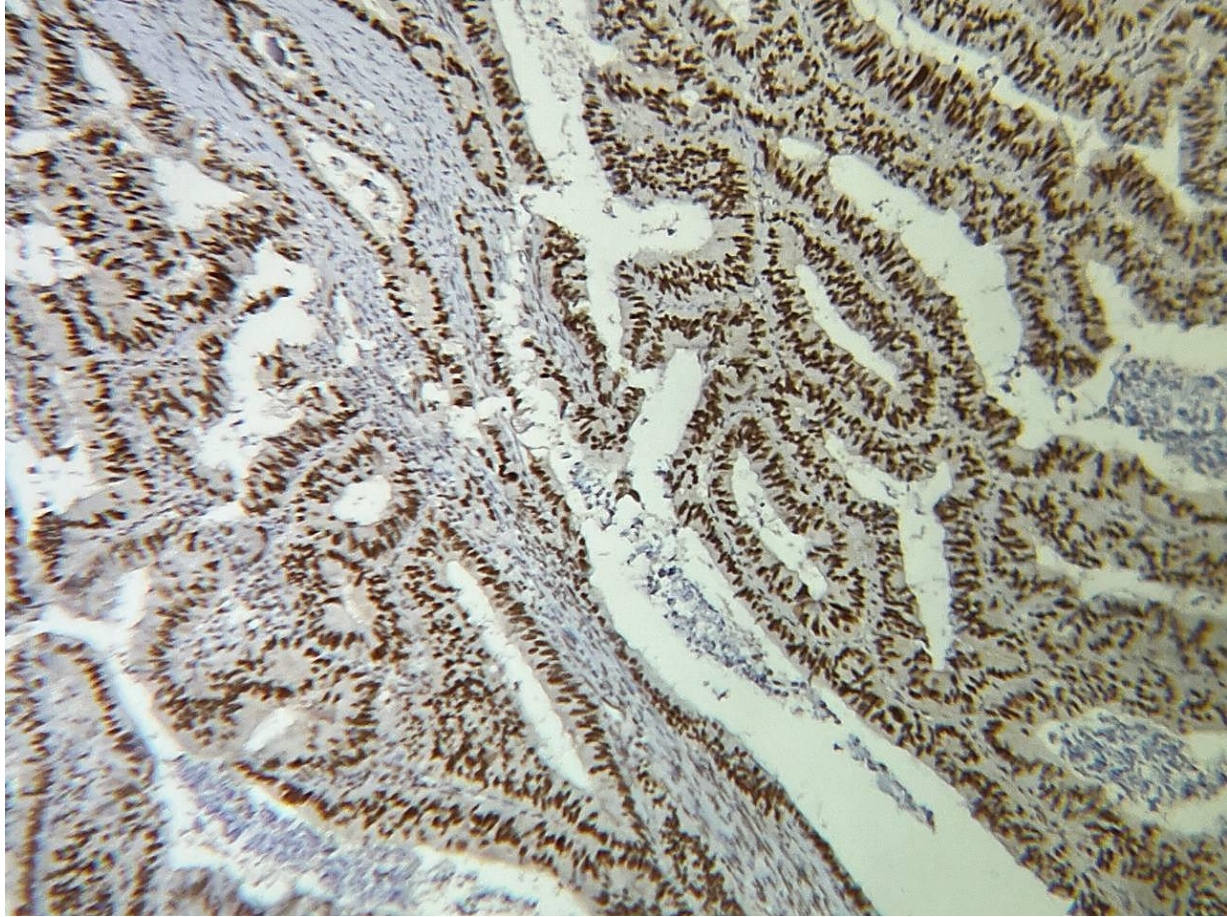
Case MMR #1

How do you report this MMR test?

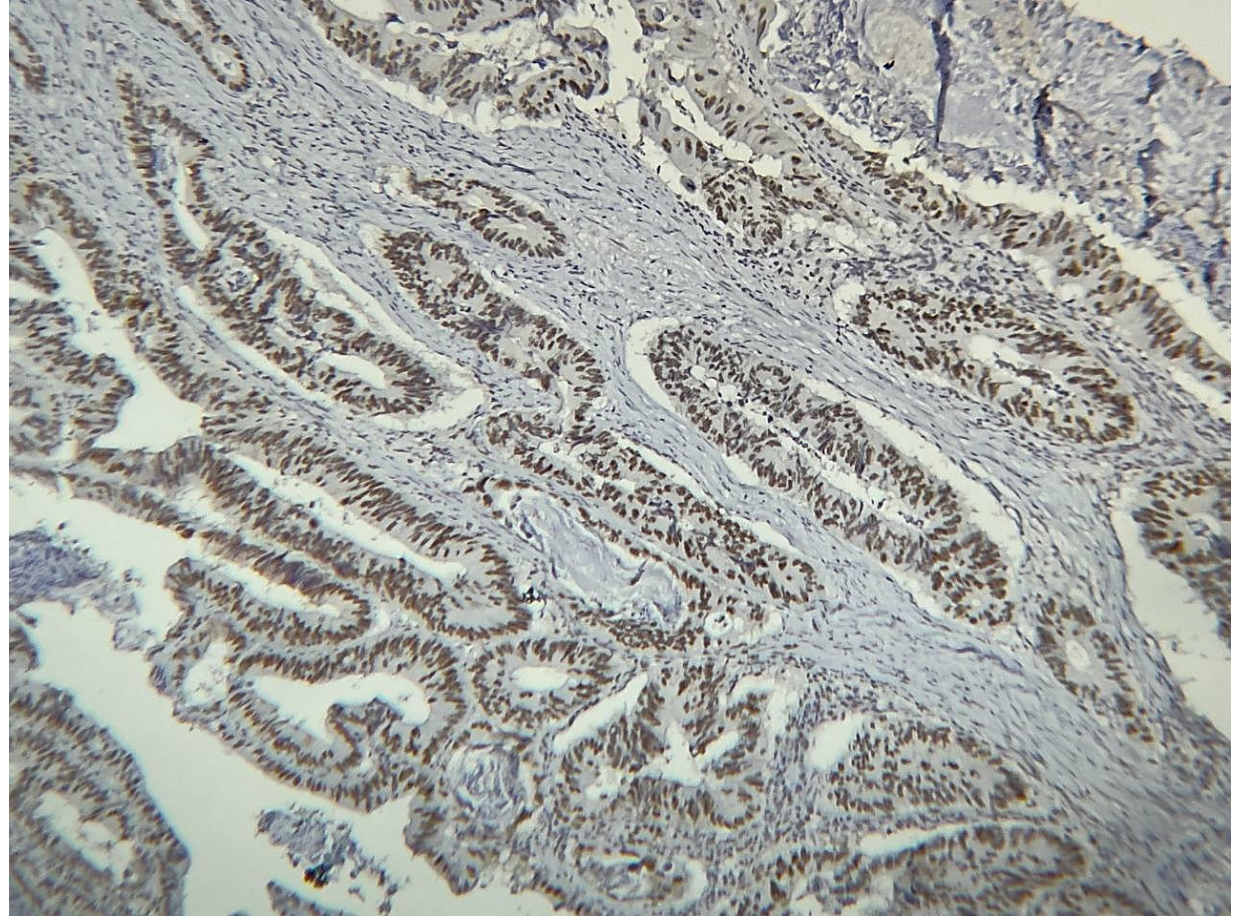
Case MMR #1

55/Male, Colon cancer

Page 1/2



MLH1

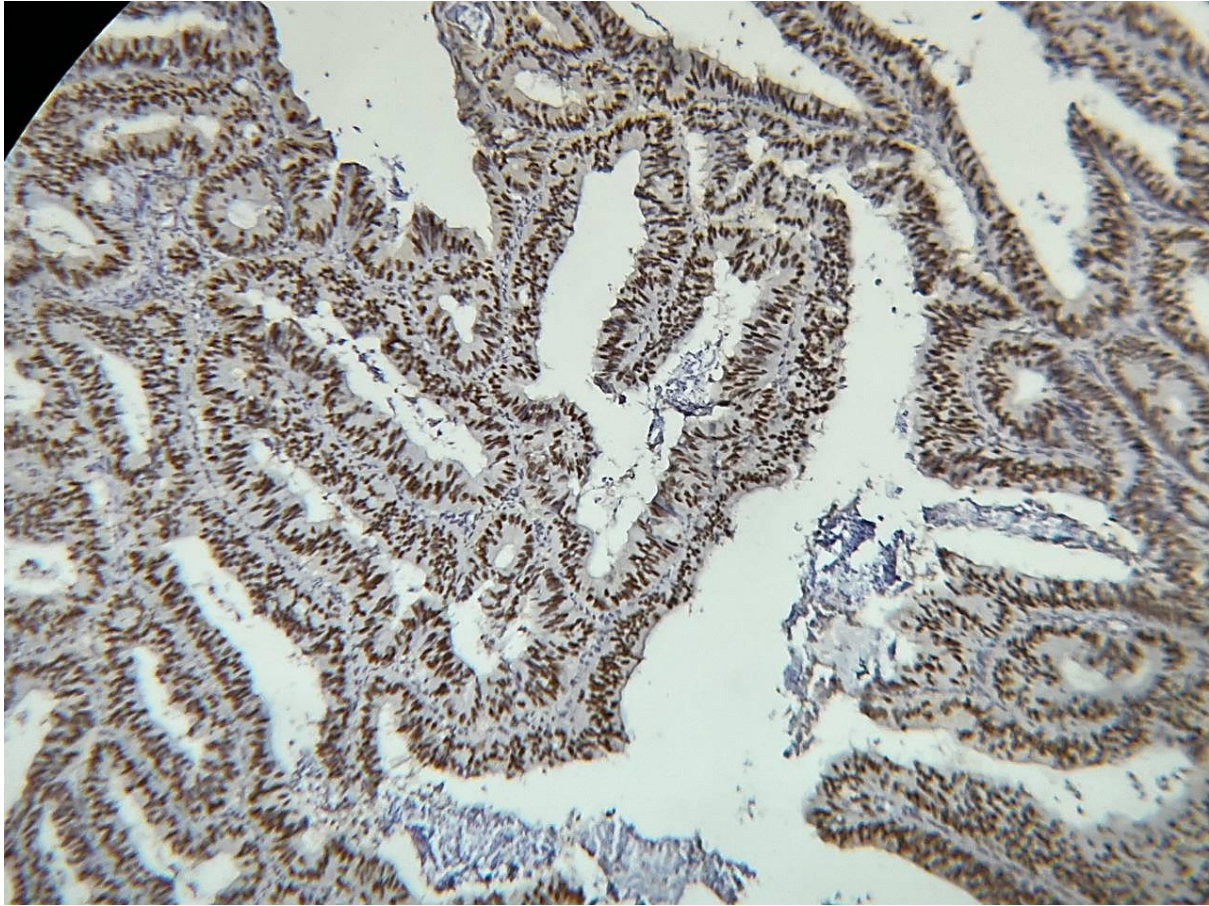


PMS2

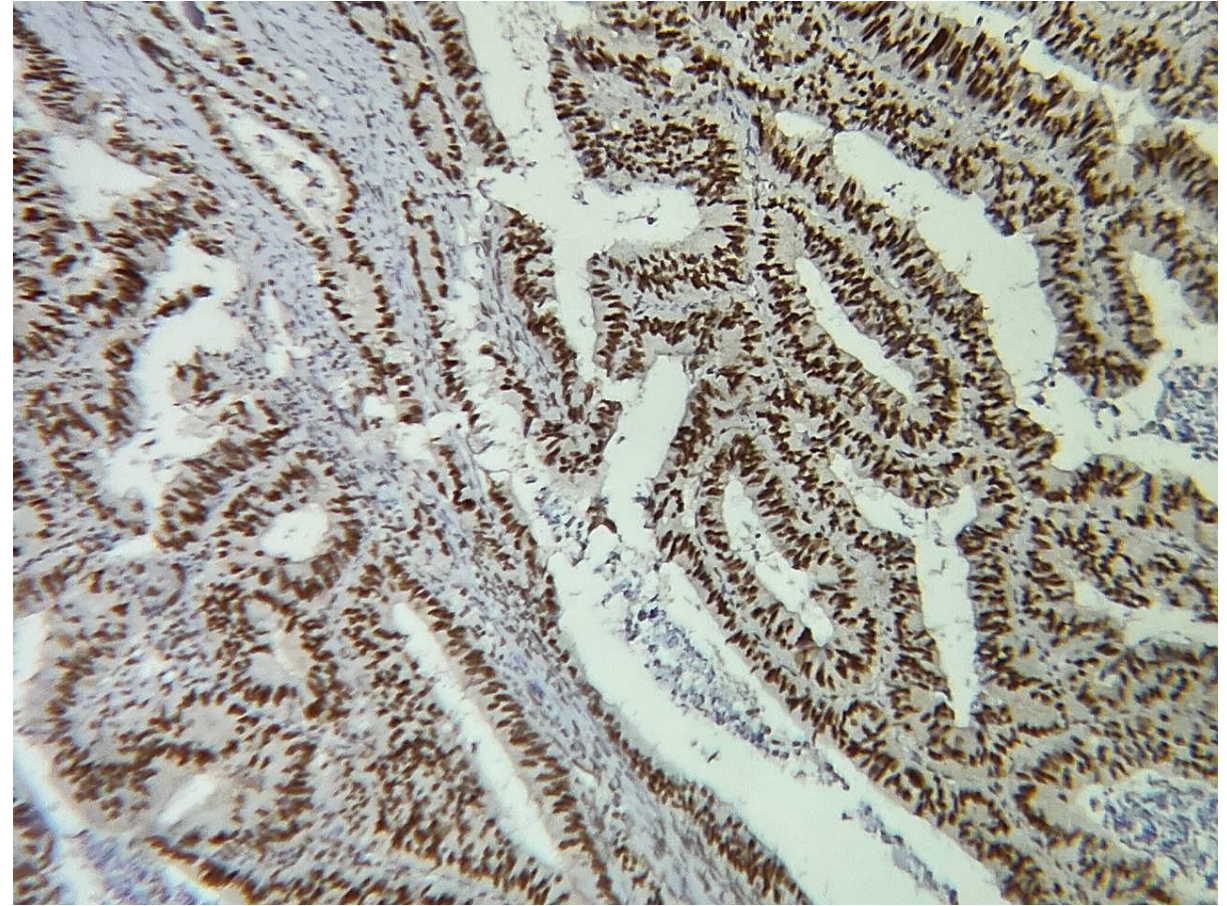
Case MMR #1

55/Male, Colon cancer

Page 2/2



MSH2

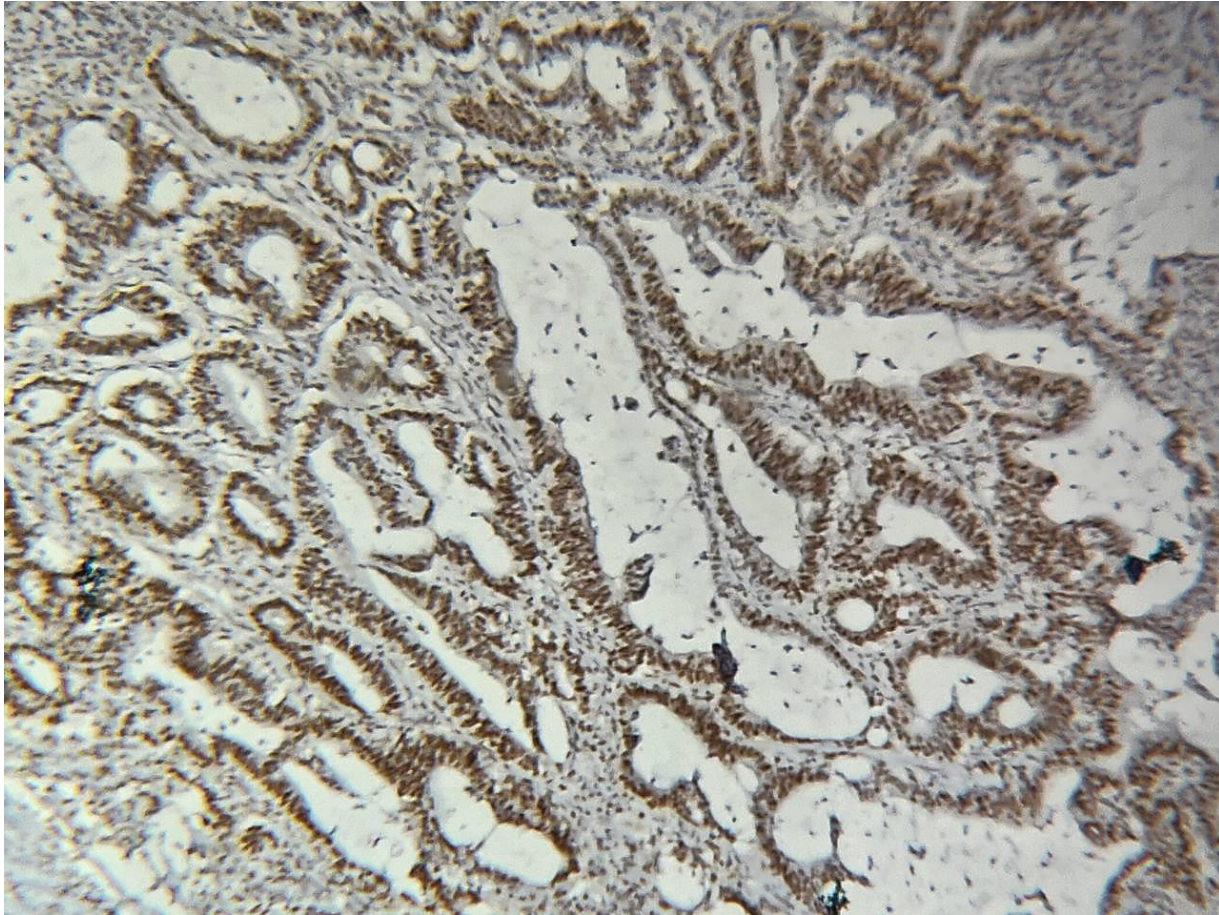


MSH6

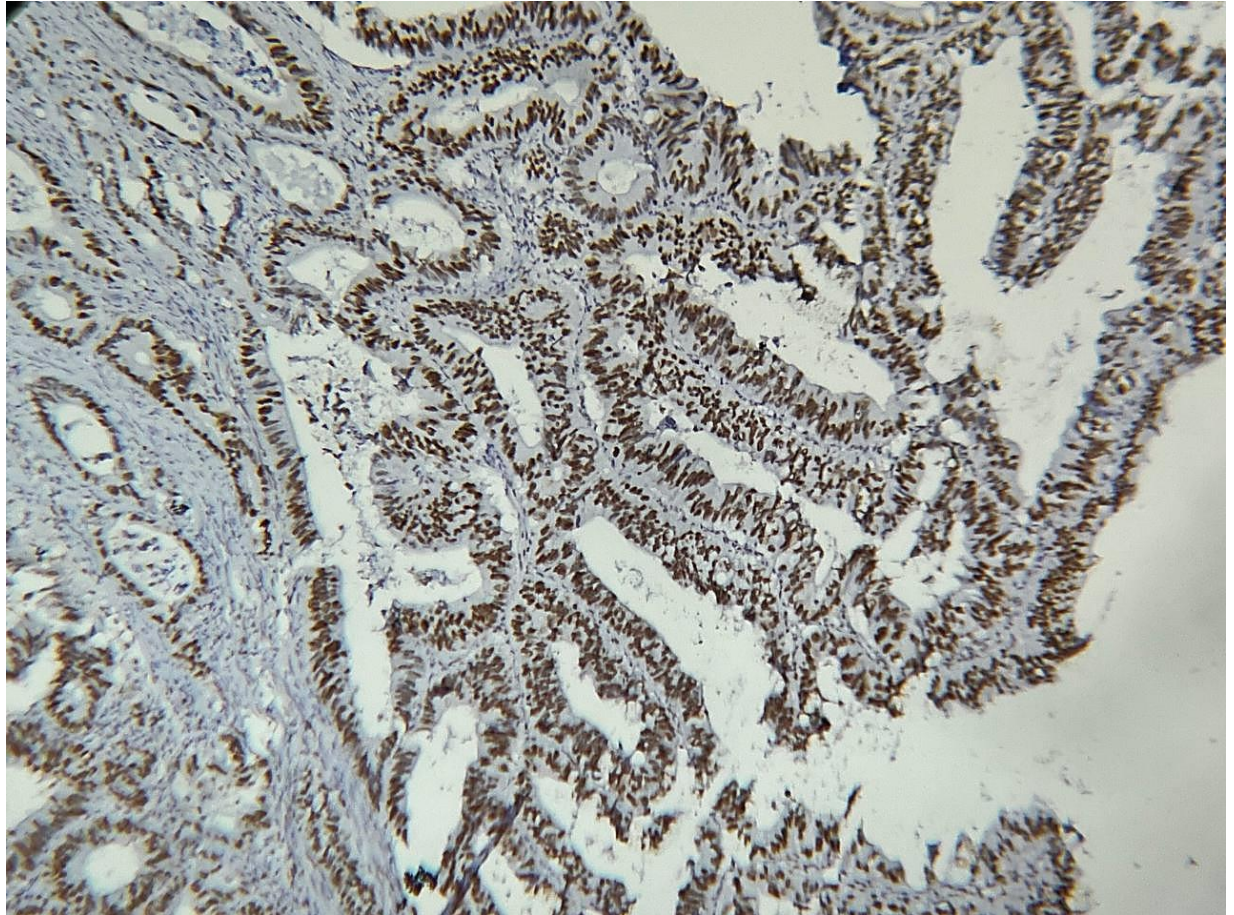
Case MMR #2

How do you report this MMR test?

Case MMR #2
45 y/o, Colon cancer
Page 1/2

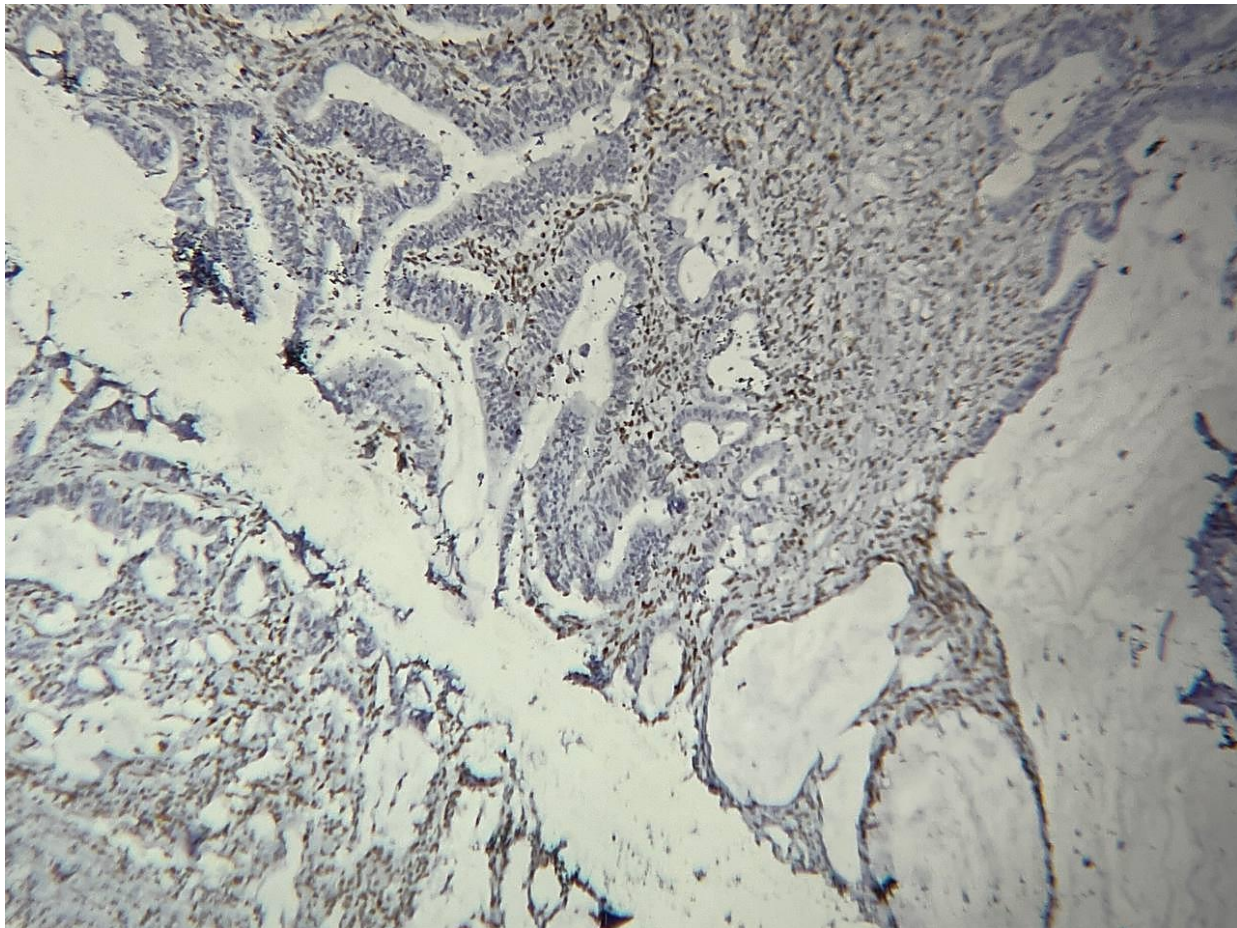


MLH1

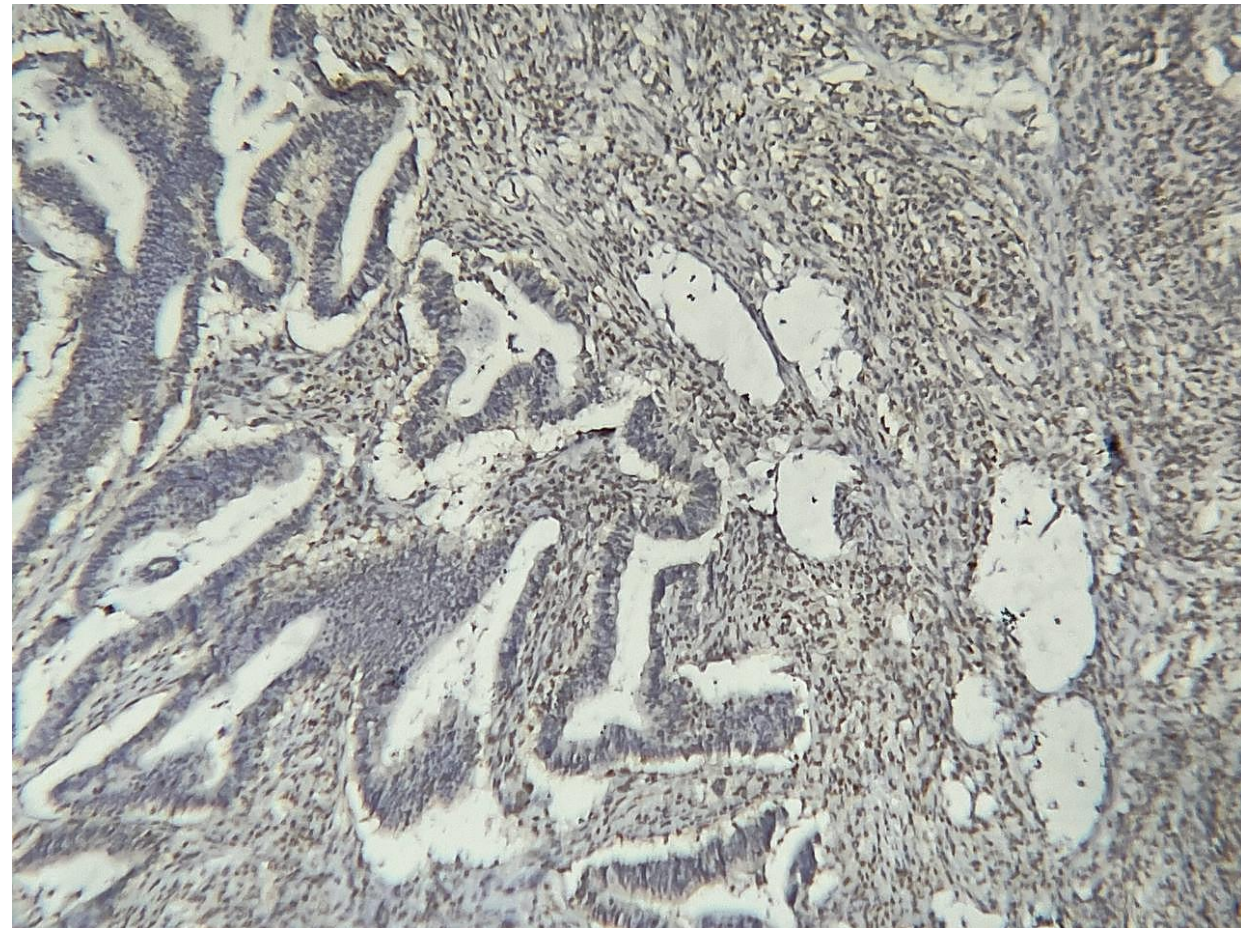


PMS2

Case MMR #2
45 y/o, Colon cancer
Page 2/2



MSH2

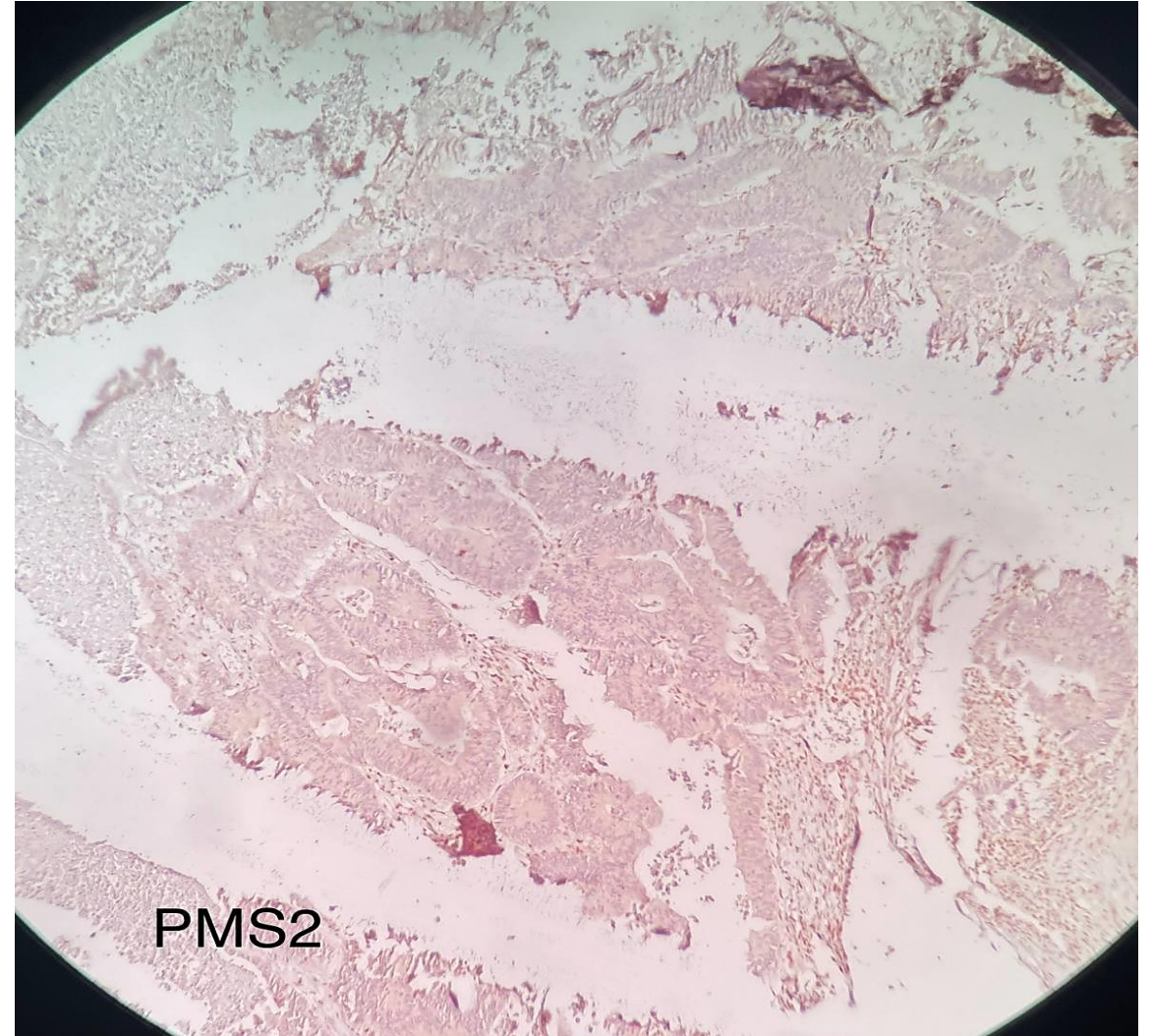
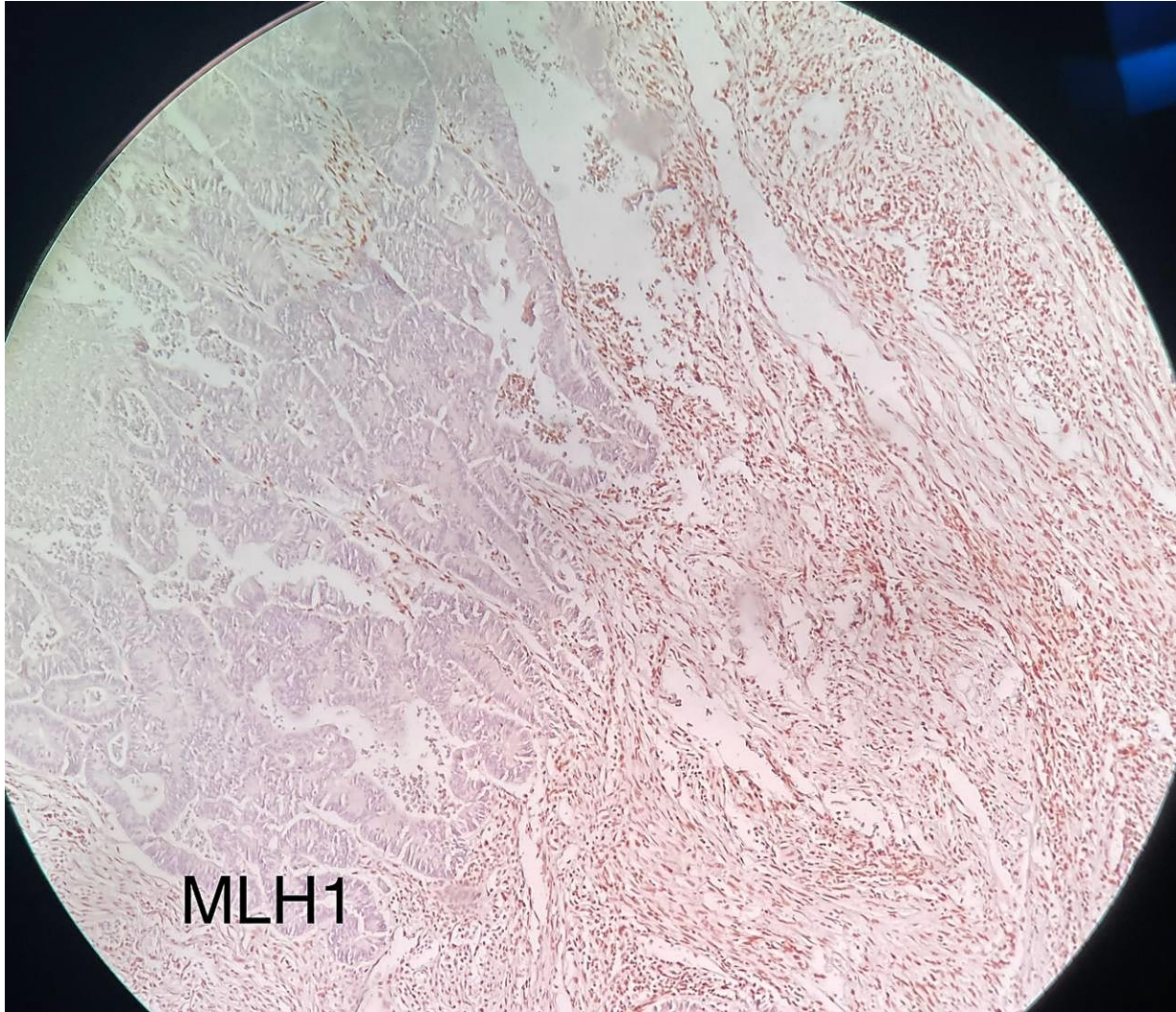


MSH6

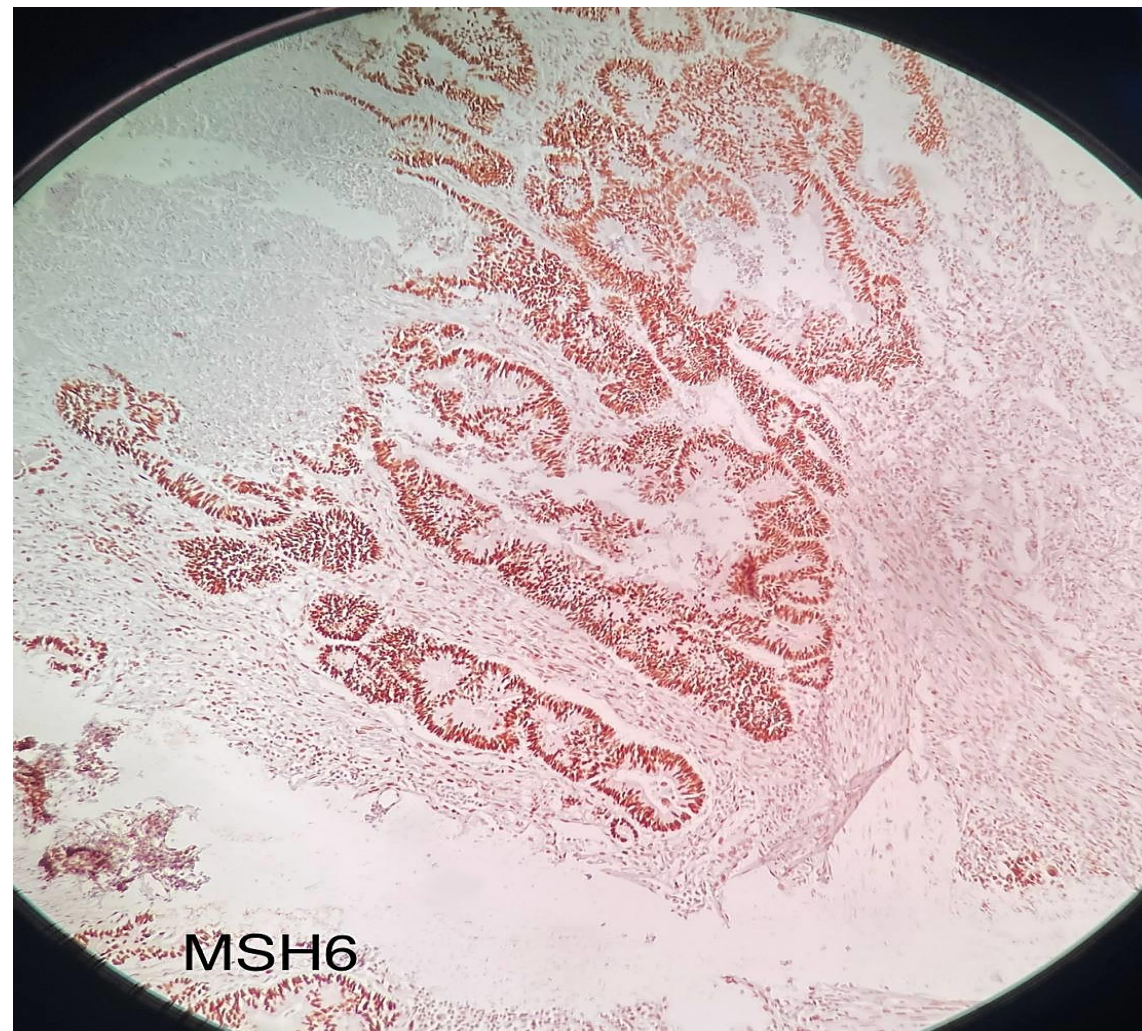
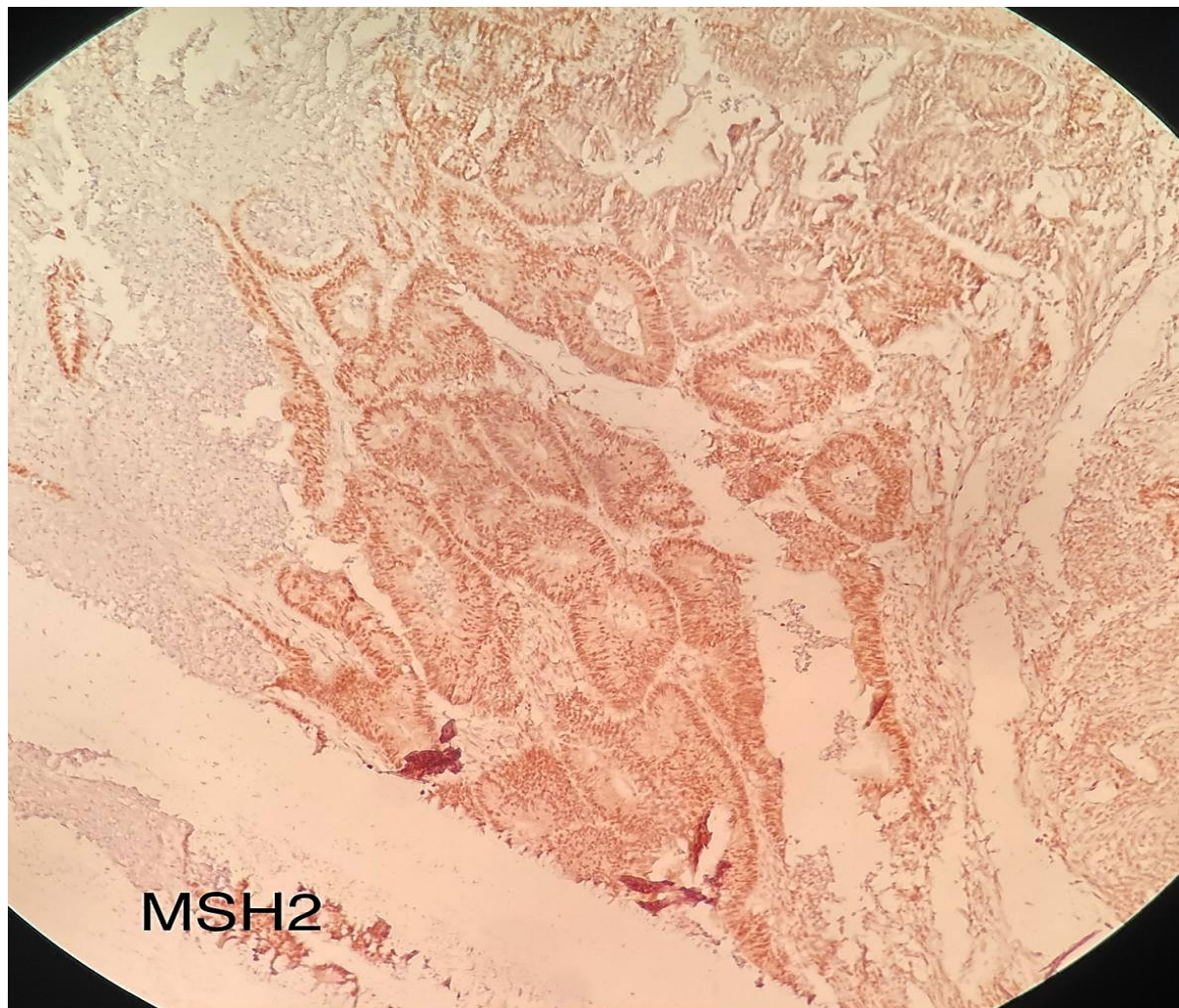
Case MMR #3

How do you report this MMR test?

Case MMR #3
50 y/o, Colon cancer
Page 1/2



Case MMR #3
50 y/o, Colon cancer
Page 1/2



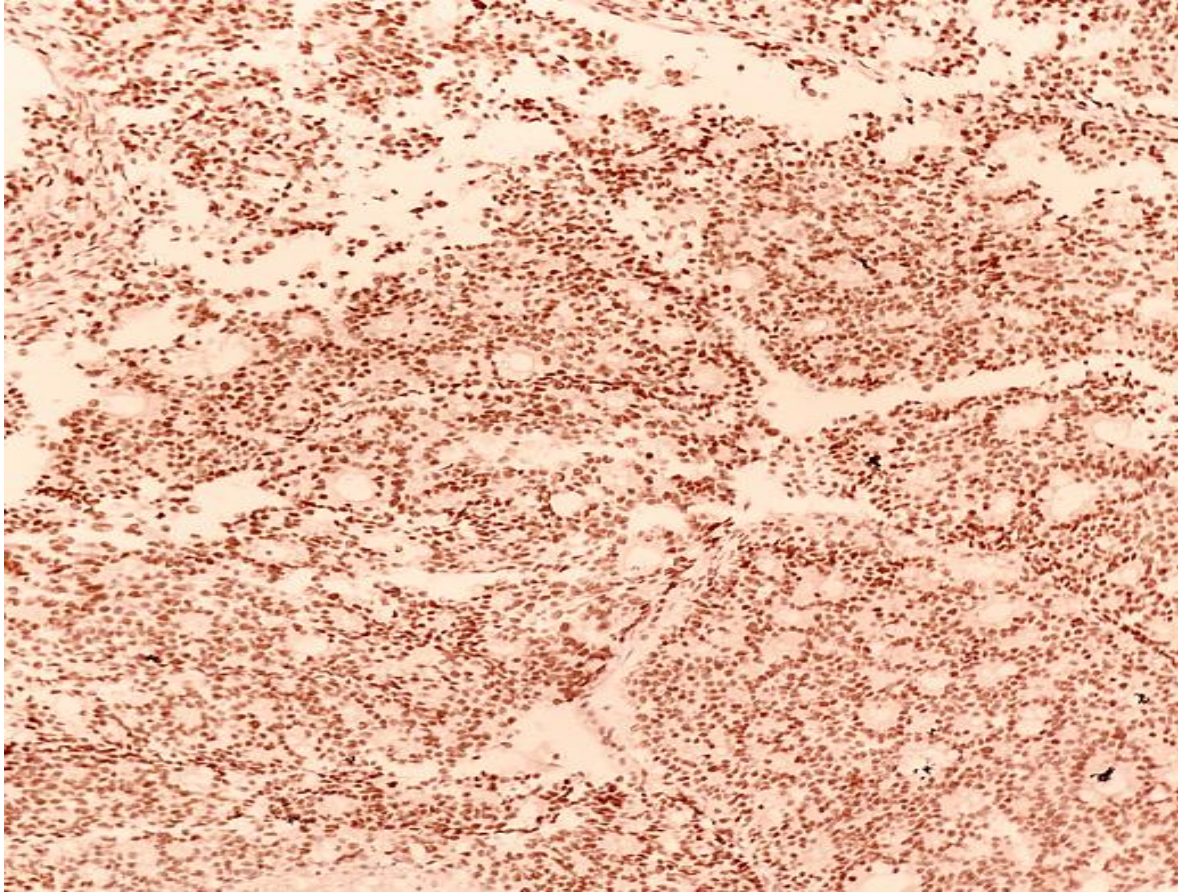
Case MMR #4

How do you report this MMR test?

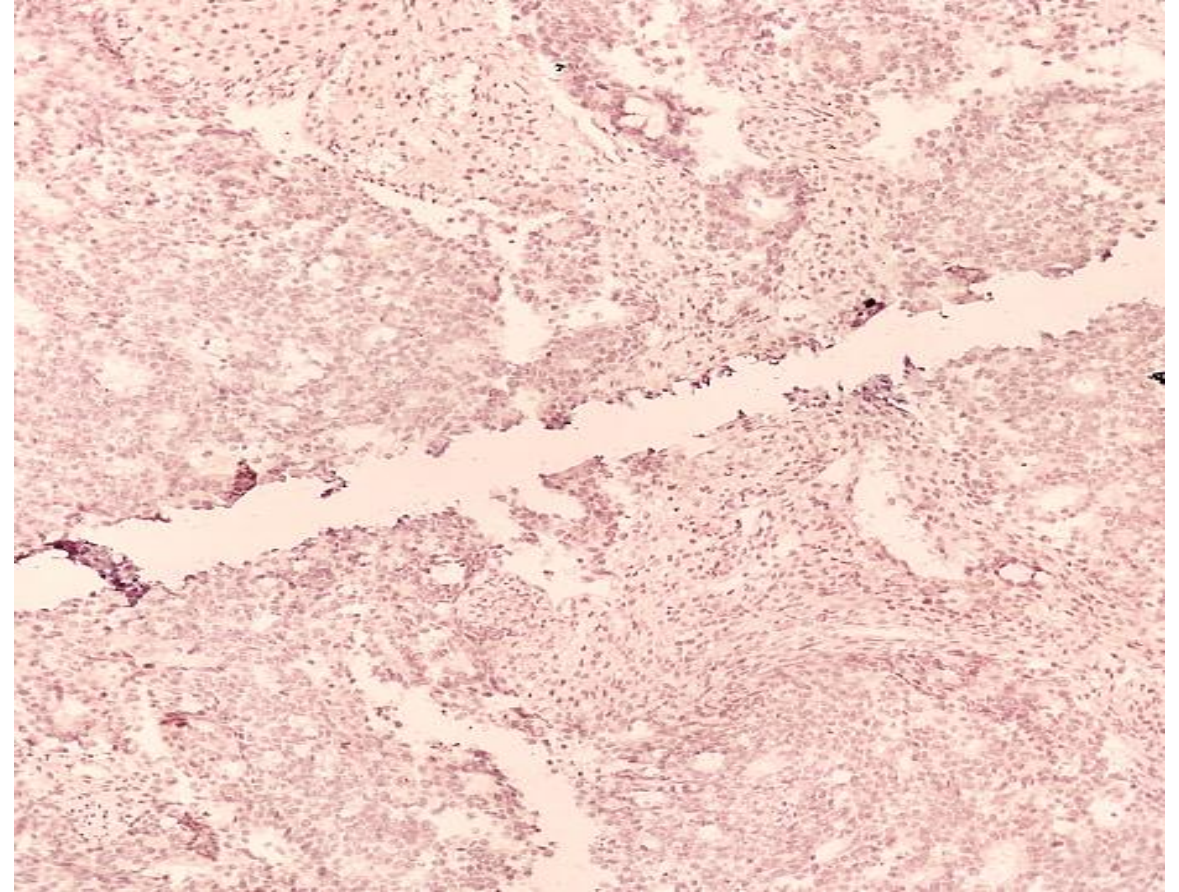
Case MMR #4

50/F, Endometrial cancer

Page 1/2



MLH1

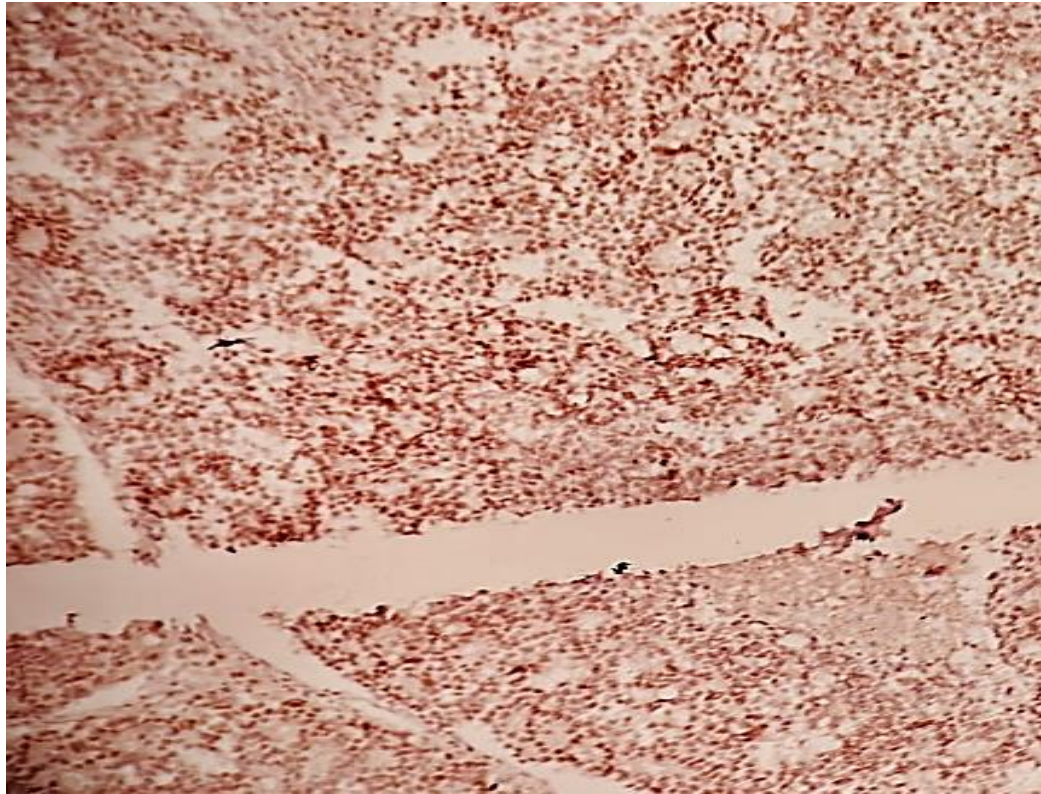


PMS2

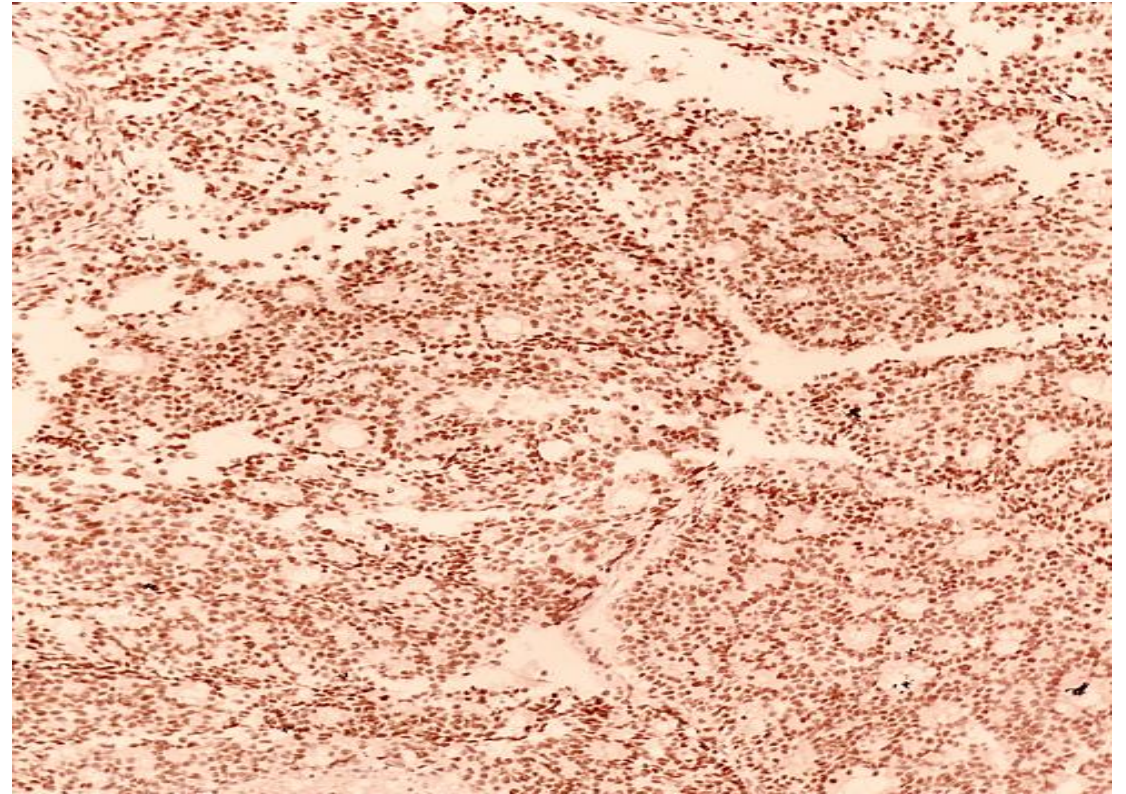
Case MMR #4

50/F, Endometrial cancer

Page 2/2



MSH2



MSH6

Programmed Death-Ligand 1 (PD-L1)

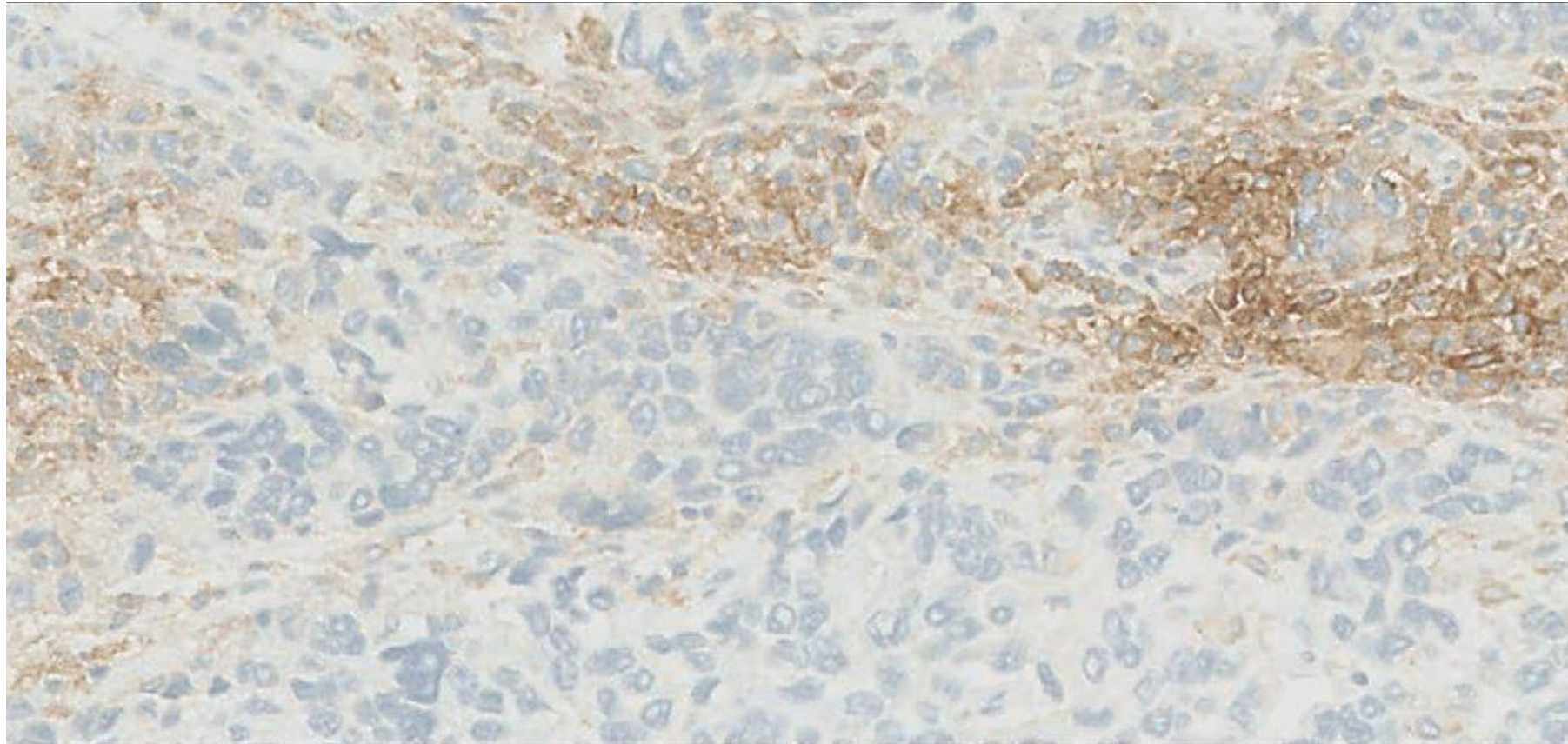
Case PD-L1 #1

How do you report this PD-L1 test?

Case PD-L1 #1

64/M, Urothelial carcinoma

Page 1/2

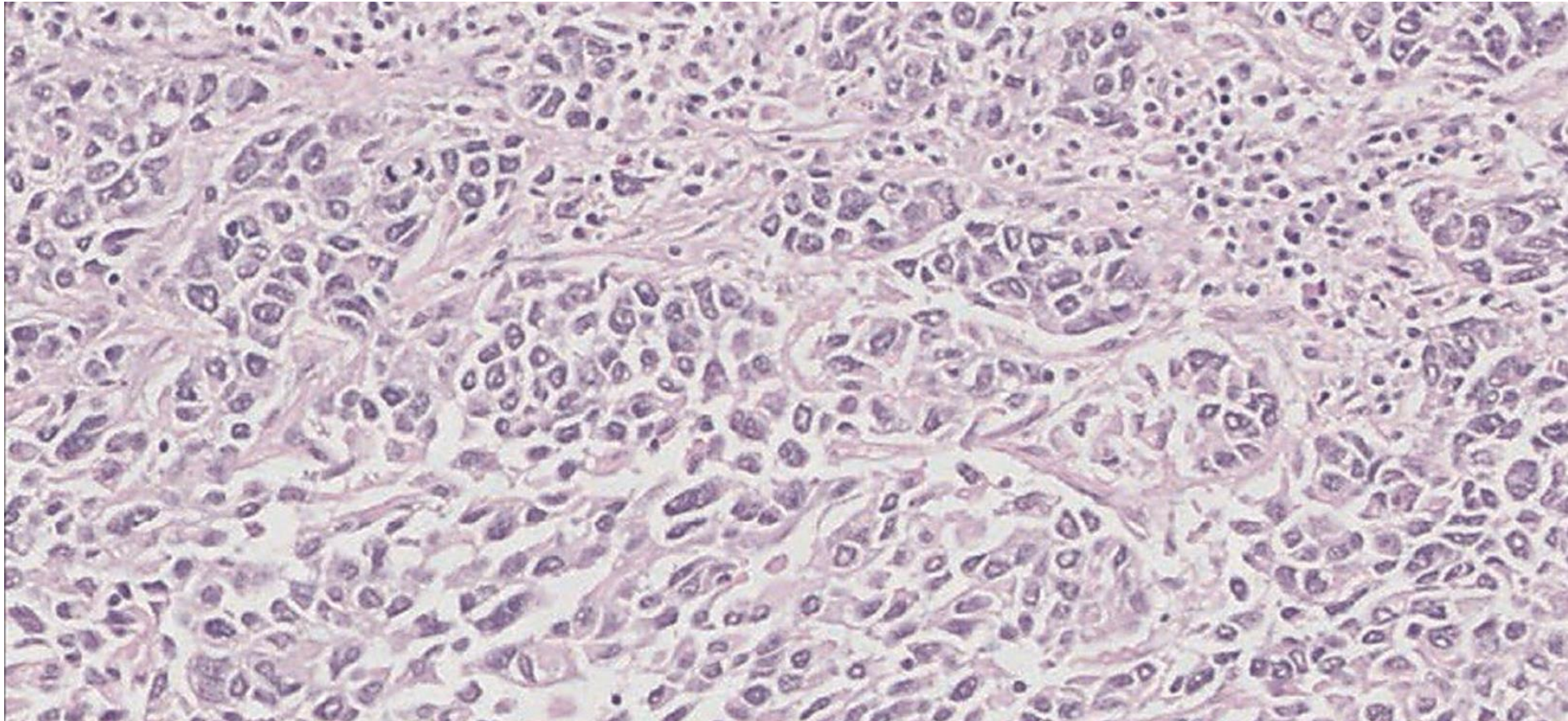


PD-L1

Case PD-L1 #1

64/M, Urothelial carcinoma

Page 2/2

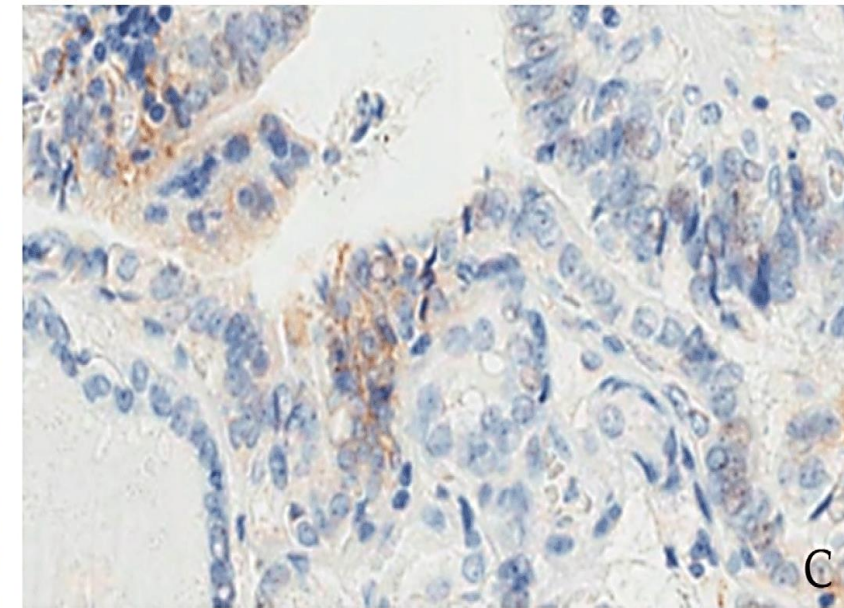
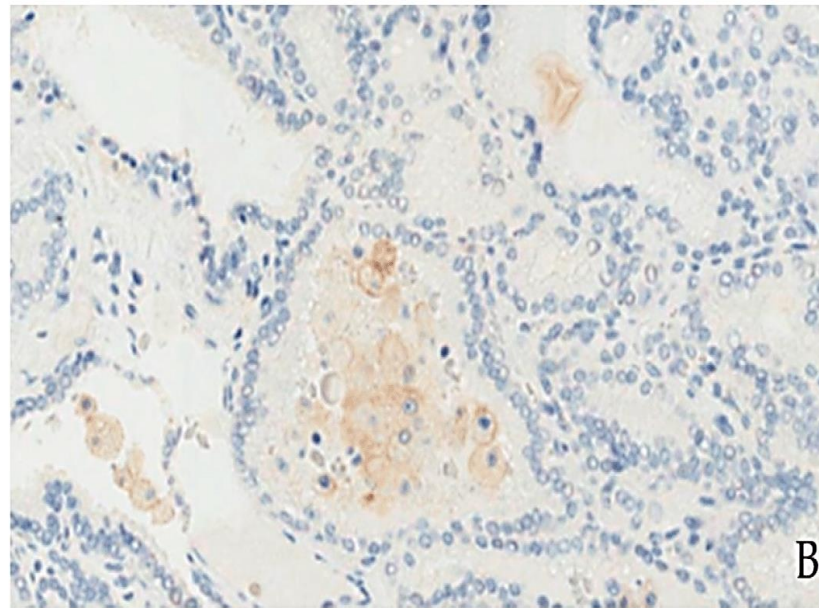
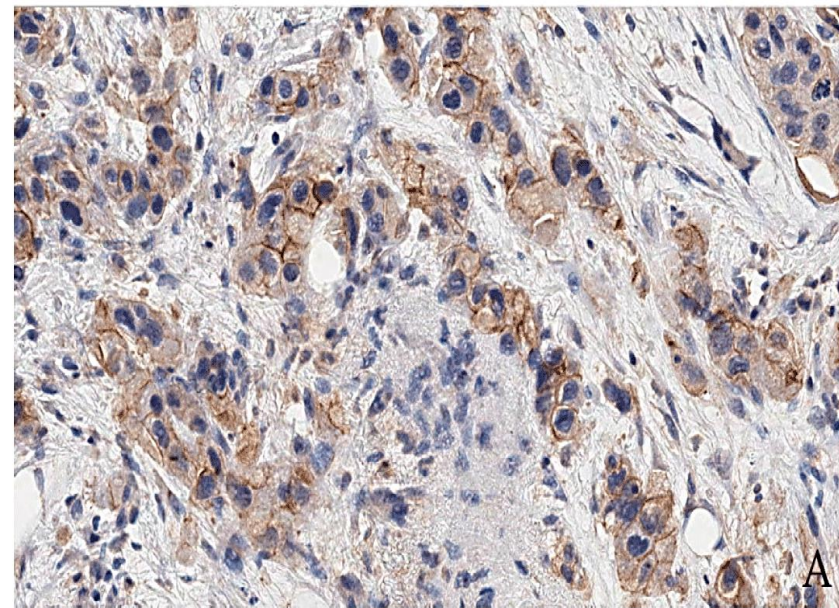


H & E

Case PD-L1 #2

What are the CPS scores for these tumors?

Case PD-L1 #2
Three NSCLC patients

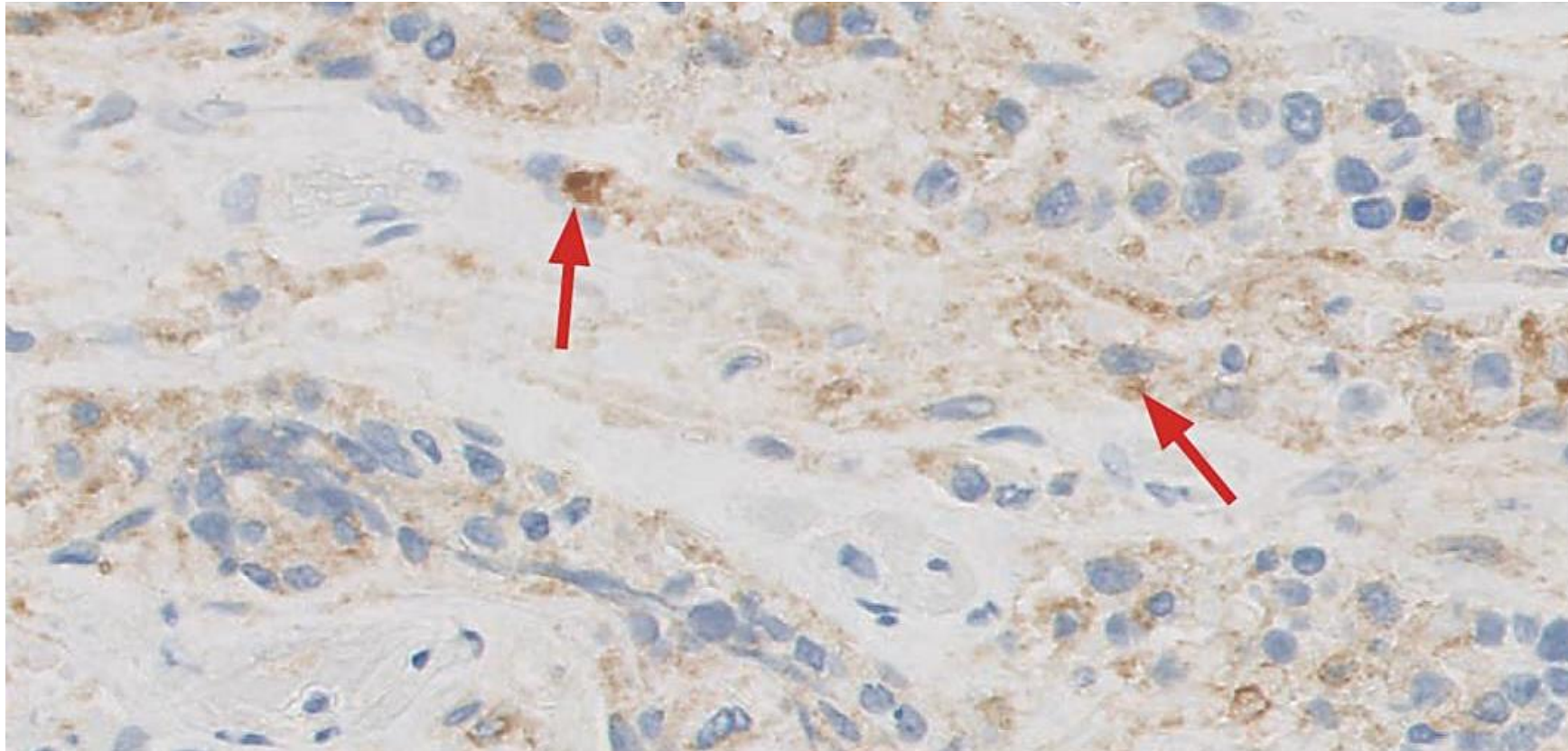


Antibody: PD-L1

Case PD-L1 #3

How do you report this PD-L1 test?

Case PD-L1 #3
45/F, Triple-Negative Breast Cancer

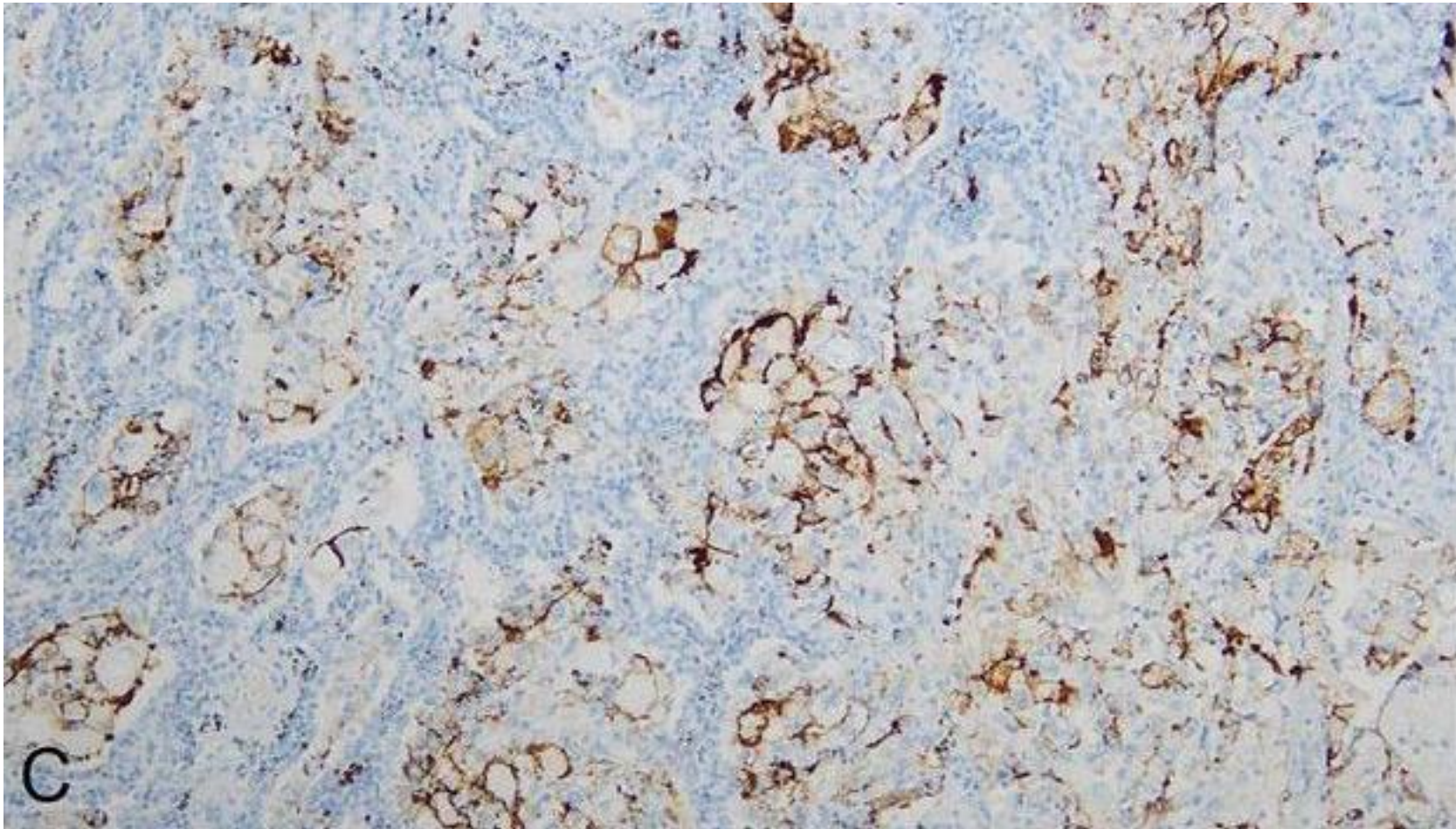


PD-L1

Case PD-L1 #4

How do you report this PD-L1 test?

Case PD-L1 #4
57/F, Triple-Negative Breast Cancer

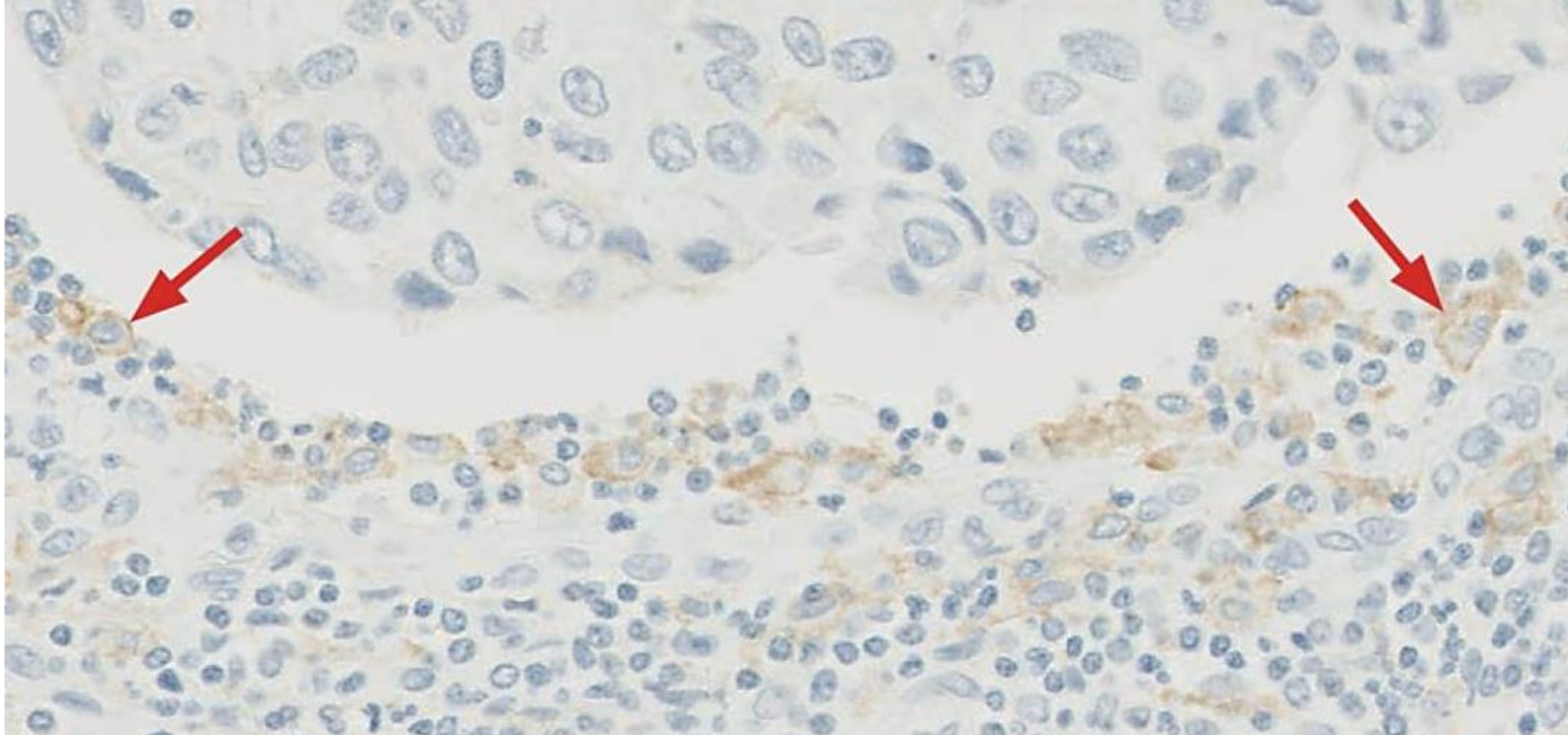


PD-L1

Case PD-L1 #5

What do you think about the PD-L1 staining of these cells?

Case PD-L1 #5
60/M, Triple-Negative Breast Cancer

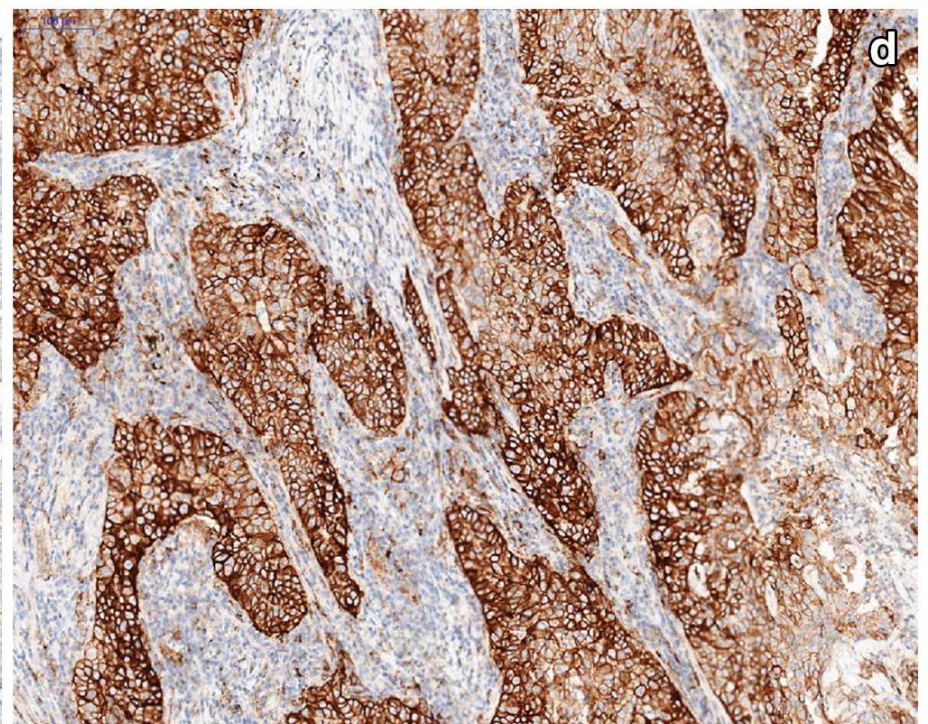
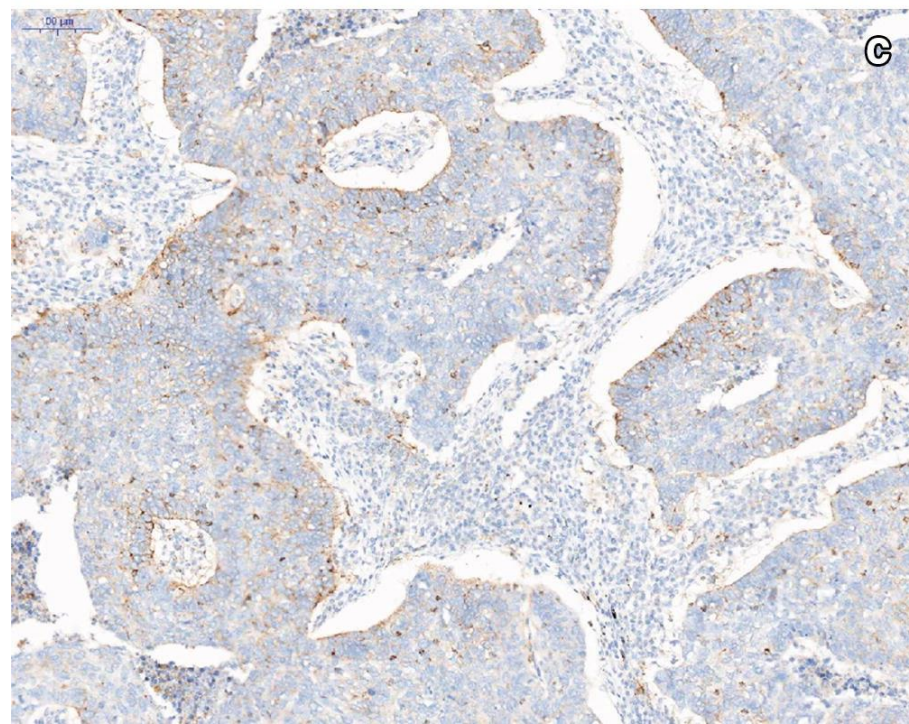
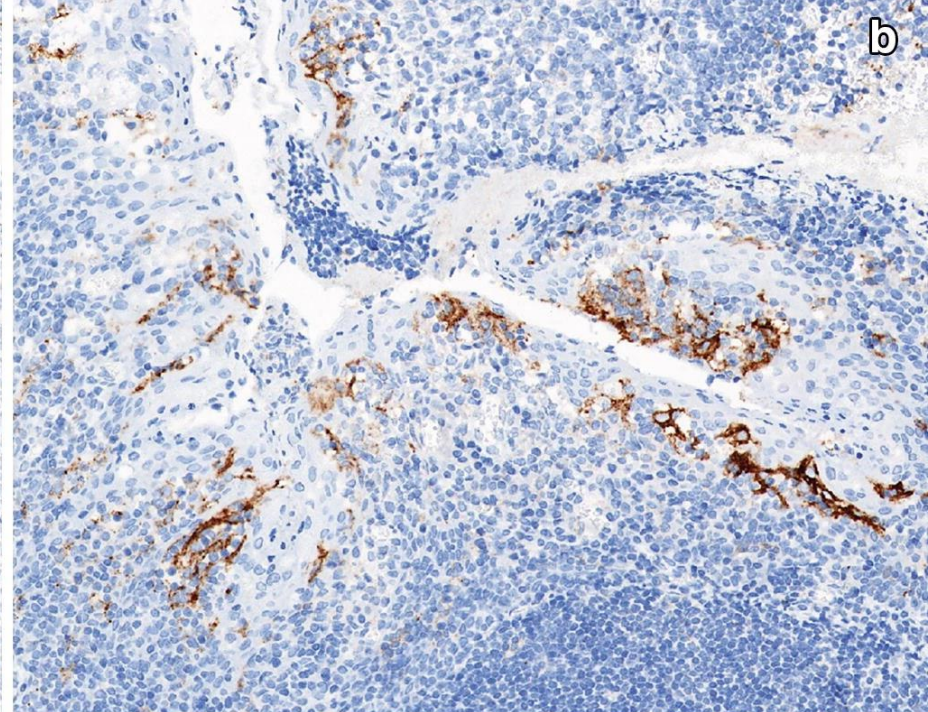
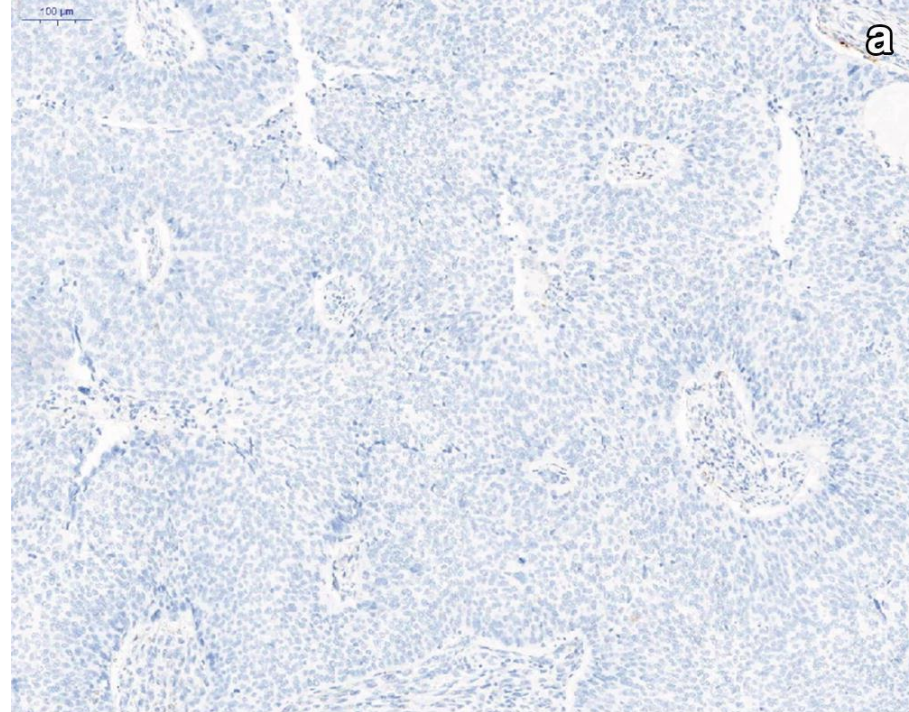


PD-L1

Case PD-L1 #6

How do you report this PD-L1 test?

Case PD-L1 #6
75/M, H&N SCC



Antibody: PD-L1

Thank you for showing interest!
See you on
Thursday, 9:00-10:30 am